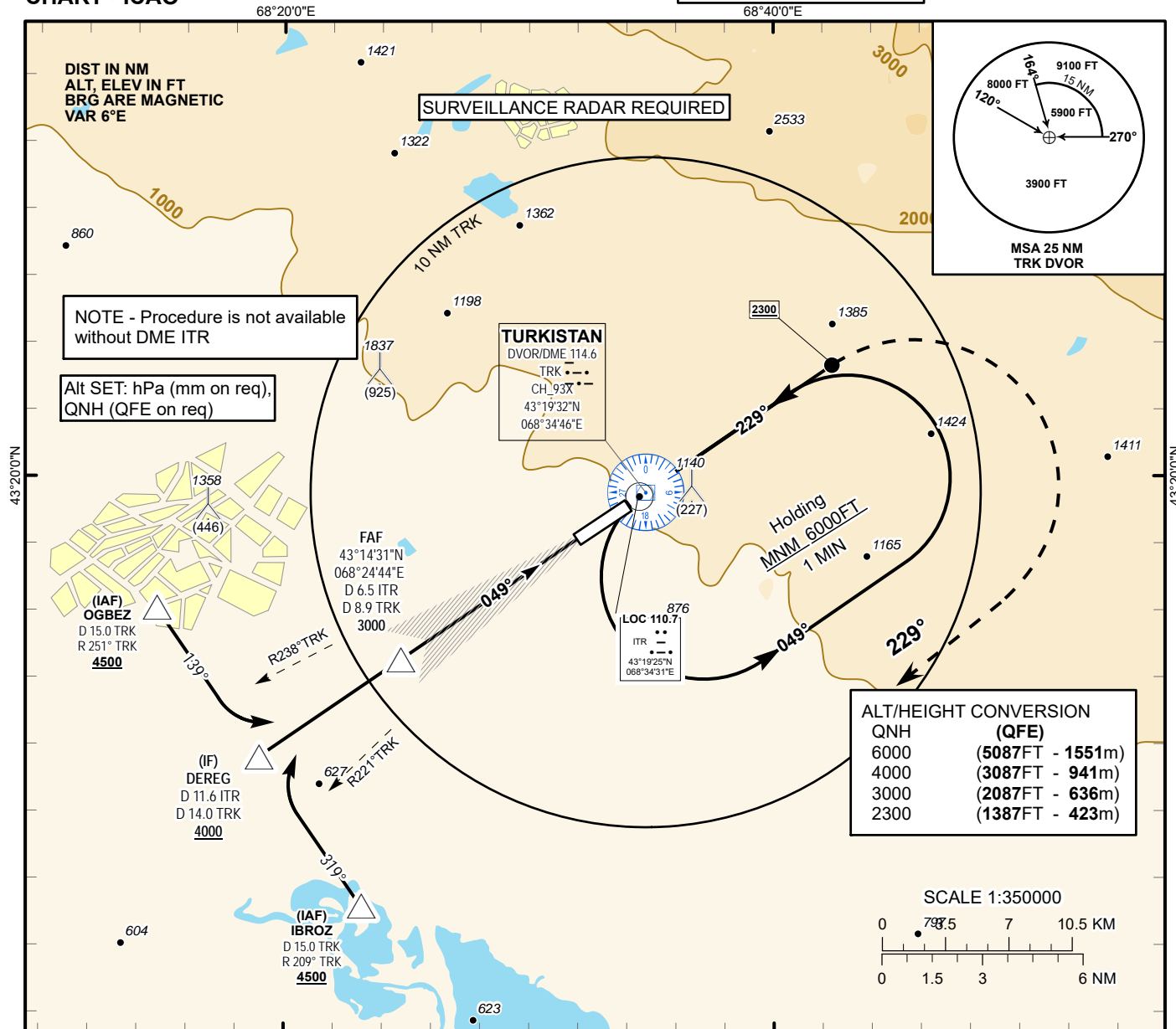


INSTRUMENT  
APPROACH  
CHART - ICAOAERODROME ELEV **989 FT**  
HEIGHTS RELATED TO  
THR RWY 05 - ELEV **913 FT**TURKISTAN TOWER 131.3  
TURKISTAN ATIS (EN) 124.4  
TURKISTAN ATIS (RU) 118.3TURKISTAN  
LOC/DME Y  
RWY 05

## MISSSED APPROACH

IF  
DEREG  
D11.6 ITR  
D14.0 TRK  
4000

FAF  
D6.5 ITR  
D8.9 TRK  
3000

PDG 5.2% (3.0°)  
049°

MAPt  
0.5 ITR  
049°

DVOR/DME  
TRK

THR 05  
ELEV 913FT

TRANSITION ALT 10000 FT

CLIMB ON TRACK 049°  
at 2300 ft or above,  
turn RIGHT on track 229°  
climbing to 4500 ft or above,  
then as directed.  
Missed approach turn  
speed limited to  
240 Kt IAS maximum.

Aircraft Category		A	B	C	D	DIST to THR	NM	6.5	6.0	5.0	4.0	3.0	2.0	1.0
Straight-in Approach OCA/H						DME TRK	NM	8.9	8.4	7.4	6.4	5.4	4.4	3.4
	LLZ(GP INOP)	1180(270)				ALTITUDE	FT	3000	2872	2554	2236	1917	1599	1280
						HEIGHT	FT	2087	1959	1641	1323	1004	686	367
DME ITR ZERO RANGED TO THR RWY 05														
Aerodrome Operating Minima MDH ft x RVR(CMV)	LLZ(GP INOP)													
						GS	Kt	80	100	120	140	160	180	
						Desc.Rate (5.2%)	ft/min	420	530	640	740	840	950	
						FAF-MAPt	min:sec	4:25	3:32	2:57	2:31	2:12	1:58	

TURKISTAN  
LOC/DME Y RWY 05                      AERONAUTICAL DATA TABULATION

LOC/DME approach to RWY05 from IBROZ, DEREK, OGBEZ	
Fix/point	Coordinates
TRK DVOR/DME	43° 19' 32.3"N 068° 34' 46.1"E
OGBEZ (IAF) R251°, D15.0 TRK	43°16'05.00"N 068°14'47.01"E
IBROZ (IAF) R209°, D15.0 TRK	43°7'09.8"N 068°23'06.5"E
DEREG (IF) D11.6 ITR, D14.0 TRK	43° 11' 37.3"N 068° 18' 57.3"E
(FAF) D6.5 ITR, D8.9 TRK	43° 14' 31.2"N 068° 24' 43.7"E
THR RWY05	43° 18' 10.00"N 068° 32' 00.99"E
ITR LLZ	43° 19' 24.6"N 068° 34' 30.8"E
Final approach descent angle is 3°	